



MA'ANSHAN ONA INTELLIGENT EQUIPMENT CO., LTD

**Ma'anshan Ona Intelligent Equipment Co., Ltd**

Email: [sales@onaie.cn](mailto:sales@onaie.cn)

Website: [www.onacasting.com](http://www.onacasting.com), [www.onacrusherparts.com](http://www.onacrusherparts.com)

Tel: +86 0555-7168980

Address: No. 9 South Dachengfang West Road, Dangtu District Enconomic Development Zone,  
Ma'anshan City, Anhui Province, China



# MINING CRUSHER PARTS

PROFESSIONAL MANUFACTURER

MA'ANSHAN ONA INTELLIGENT EQUIPMENT CO., LTD





# About Us.

ONA is a professional manufacturer of crushers and crusher parts. Servicing the mining and construction industries for years, we have built up a scientific system of production, sales and services. We are offering products over 50 countries and enjoy good reputation among our customers for high-quality products, integrity and responsibility. Our products range from cone crushers and jaw crushers to bronze casting parts, high-manganese steel casting parts and steel parts, which meet OEM standard and produced basing on the original drawings.

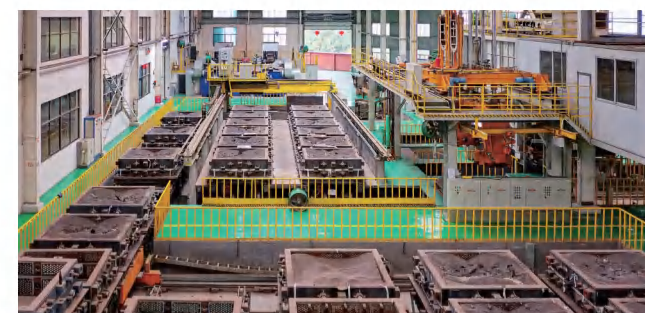
High-efficient and high-precision processing equipment is widely used in our production line. Our qualified engineers, skilful workers and office staff with rich exporting experience ensure us to present high-quality products to our customers.

Our goal is to provide overall cost-saving products and improve the productivity of equipment.



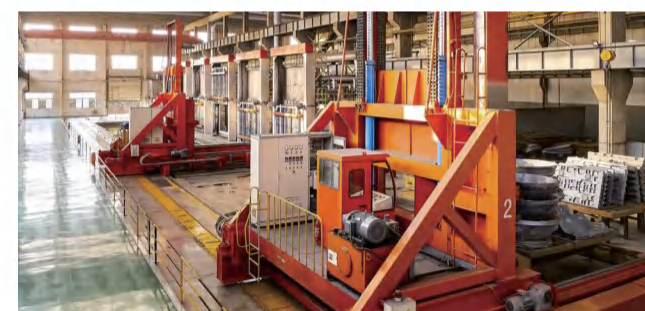
## MOULDS

Currently owns 20,829 moulds, with an average of 690 new moulds added each year.



## MELTING FURNACE

1 set of 0.7T test furnace, 1 set of 3T intermediate frequency furnace, 1 set of 10T intermediate frequency furnace, 1 set of 12T intermediate frequency furnace.



## V-PROCESS & V-METHOD&MOLDING

V-Process production technology for manufacturing crusher wear parts jaws and pulverizer hammers as well as mill liners.



## HEAT TREATMENT

12 sets of natural gas heat treatment furnaces, 1 set of isothermal heat treatment furnace, 4 sets of electric furnaces.



# Jaw Plate

- The application depending on whether you are working in quarrying, mining or recycling, determines the most suitable jaw plates - and ultimately the right crushing chamber.
- The optimal jaw plate selection can be determined based on the rock/ore type characteristics (WI, AI) and the feed characteristics (friction, gradation).
- All manganese possesses the following common features:
  - Designed for maximum operational flexibility
  - Improved material reduction
  - Increased operational life span
  - Maximize uptime
  - Reduced wear
  - Optimal production



Super Grip (XT710)



Quarry Thick (XT710, XT810)



Anti-slab (XT710)



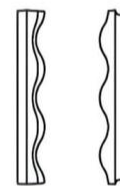
Quarry (XT710, XT810)



Quarry + Super Grip (XT710, XT810)



Recycling (XT710)



Wavy Like (XT710)



Wide Plate



Coarse Corrugated



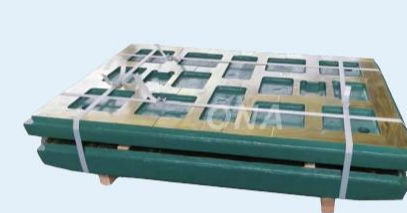
Sharp Plate



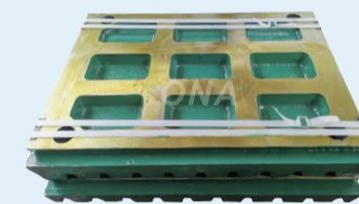
Heavy Duty



Corrugated



Metso



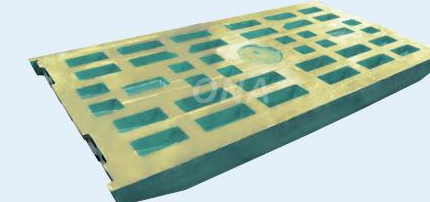
Metso



Metso



Sandvik



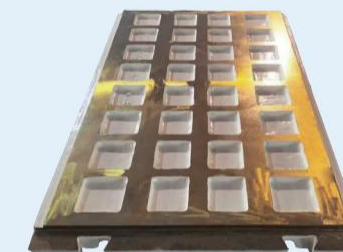
Sandvik



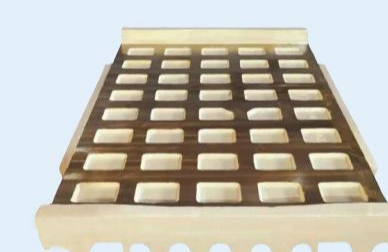
Sandvik



Telsmith



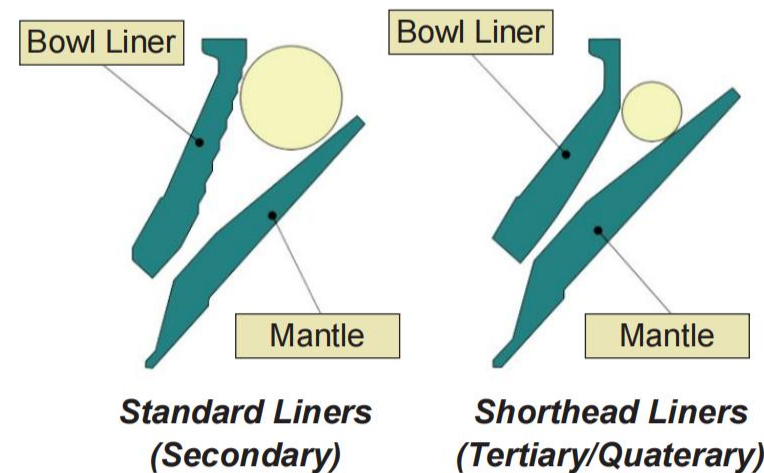
Trio



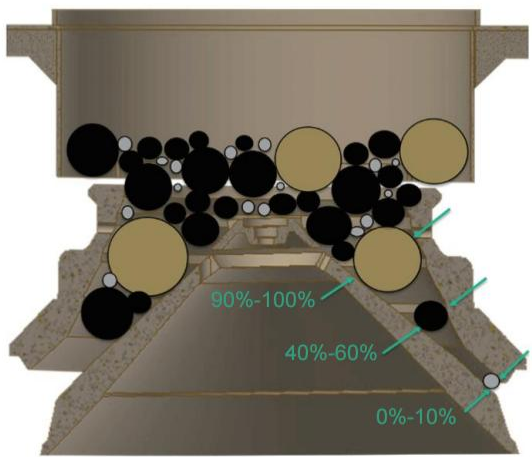
Trio



# Selecting A Cone Crusher Liner

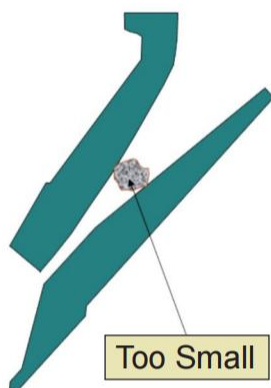


A wide range of liners are available to accommodate coarse and fine feeds, but which you choose depends on several factors. The most important factor in Cone Crusher liner selection is the feed.



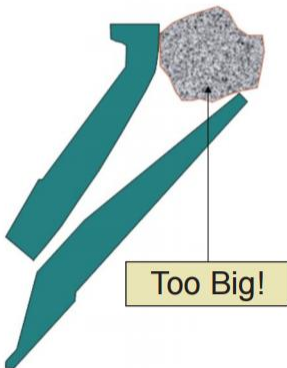
You should have a well-graded feed going into the crushing chamber. A well-graded feed is generally considered as:

- 90-100% passing the closed-side feed opening. Some people look at 80% of the open side as well and select the smaller of the two.
- 40-60% passing the midpoint.
- 0-10% passing the closed-side setting.



You want to match the entire feed gradation, not just the feed size, so that you utilize the entire chamber. It is important to utilize as much of the crushing chamber as possible to get the required reduction and desired throughput.

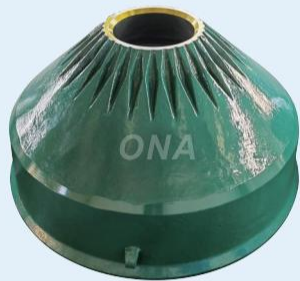
Most of the wear on crusher liners occurs right before the parallel zone (the smallest space between the mantle and the concaves where the final crushing takes place), but this wear will be accentuated if the feed is too small, and you'll end up with a bowled-out pocket before the parallel zone way too soon.



GP11F



GP200



HP4



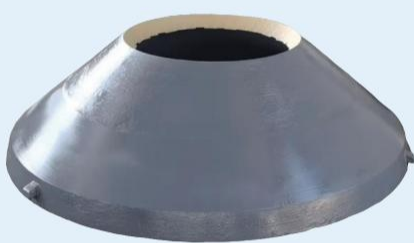
HP300



CH440



CS440



Symons



Terex



Trio



# Jaw Crusher Parts

**Model Apply to:**

**Metso:** C63, C80, C95, C96, C100, C110, C120, C130, C125, C140, C145, C150, C160, C200  
**Sandvik:** CJ408, CJ409, CJ411, CJ412, CJ612, CJ613, CJ615, CJ815, JM806, JM907, JM1108, JM1206, JM1208, JM1211, JM1312, JM1511, JM1513



Bearing Housing



Pitman



Side Plate



Cheek Plate



Protection Plate



Pulley



Toggle Plate



Toggle Seat



Deflector Plate

# Single Cylinder Cone Crusher Parts

**Model Apply to:**

**Metso:** GP100, GP200, GP300, GP500, GP11F, GP220, GP330, GP550, GP100S, GP200S, GP300S, GP500S, GP7  
**Sandvik:** CH420, CH430, CH440, CH540, CH550, CH660, CH830i, CH840, CH840i, CH860i, CH865i, CH870, CH870i, CH880, CH890, CH895, CH890i, CH895i, CS420, CS430, CS440, CS540, CS550, CS660, CS840i, CS865



Head Nut With Burning Ring



Main Shaft Sleeve



Dust Seal Ring



Inner Head Nut



Thrust Bearing Assembly



Pinion Shaft Assembly



Spider Bushing



Main Frame



Locking Nut



# Multi-Cylinder Cone Crusher Parts

**Model Apply to:**

**Metso:** HP100, HP200, HP300, HP400, HP500, HP700, HP800, HP900, HP3, HP4, HP5, HP6, MP800, MP1000, MP1250, SG4265, SG5475, SG6089, SG60110  
**Symons:** 2ft , 3ft , 4ft, 4 1/4ft, 5 1/2ft, 7ft  
**Terex:** C-1540, C-1540R, C-1545, C-1545P, C-1550, C-1550P, C-1554  
**Telsmith:** T300, T400, T500, T900, 36 S&FC, 48 S&FC, 52 S&FC, 57 S&FC, 66 S&FC, 38 SBS, 44 SBS, 52 SBS, 57 SBS, 68 SBS  
**Trio:** TP260, TP350, TP450, TP600, TP900



Counterweight Assembly



Gear And Pinion



Eccentric Bushing



Pulley



Hydraulic Motor



Pressure Accumulator



Feed Hopper



Main Frame



Drilled Block



Eccentric



Main Shaft



Tramp Release Cylinder

# Vertical Shaft Impactor (VSI) Crusher Parts

**Model Apply to:**

**Barmac:** B5100SE,B6150SE, B7150SE, B9100SE,B9600SE  
**Sandvik:** CV117, CV128, CV129, CV215,CV216,CV217,CV228,CV229



Rotor Tip



VSI Back Up Tip Set Long



Distributor Plate



Feed Eye Ring



Upper/Lower Wear Plate



Feed Tube



Cavity Wear Plate



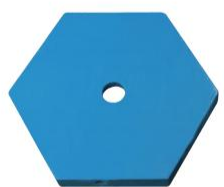
Rotor Assembly



Rotor Tip



Trial Plate



Distributor Plate



Top/Bottom Wear Plate



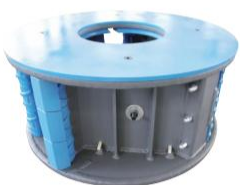
Upper/Lower Wear Plate



Feed Tube



Cavity Wear Plate



Rotor Assembly



# Impact Crusher Parts

**Model Apply to:**

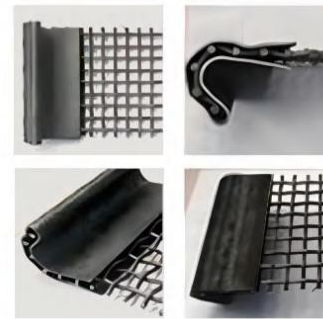
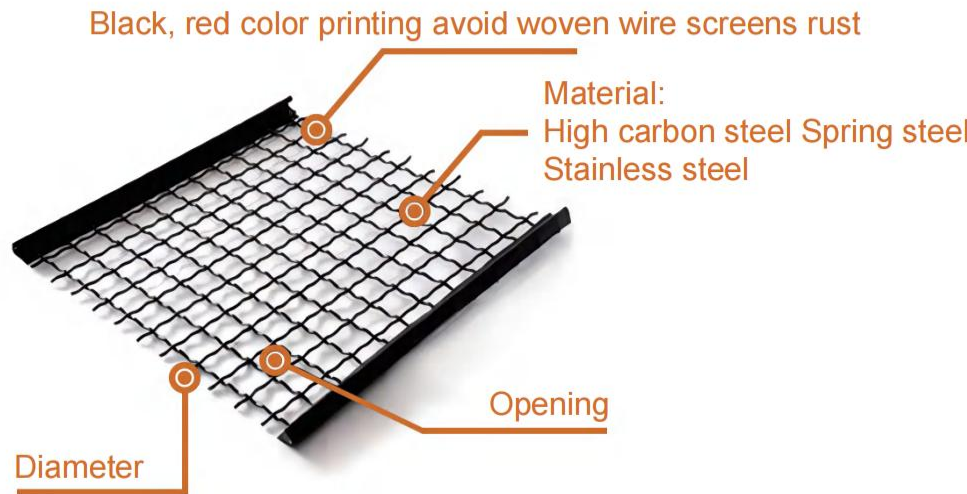
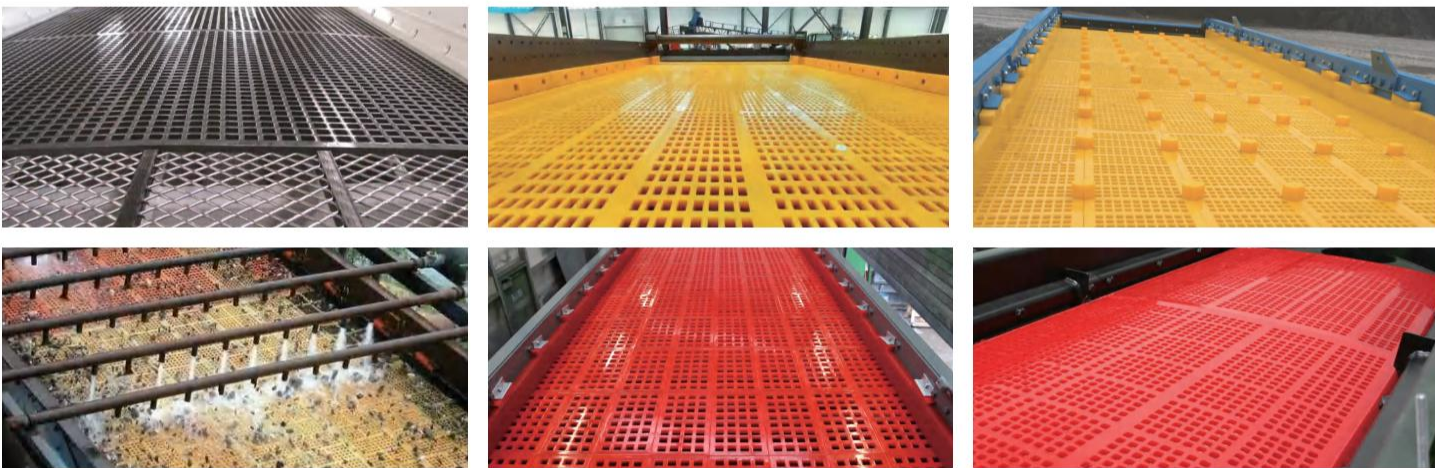
NP1110, NP1213, NP1313, NP1315, NP1415, NP1520, NP1620, NP2023



# Vertical Tower Mill Parts



# Vibrating Screen Mesh



- Longer life,
- High adhesion,
- Excellent efficiency of mechanical splice.

Mainly used as screen mesh, it is widely used in many industries, such as mining screen, quarrying screen, the screen deck, screen wire for stone crusher, Classifying Trommel; Vibrating screen; Road construction equipment; The Asphaltum mix round equipment and the mine vibrating screens, chemical industry, pharmacy, machinery, protection, construction.





Hydraulic Breaker

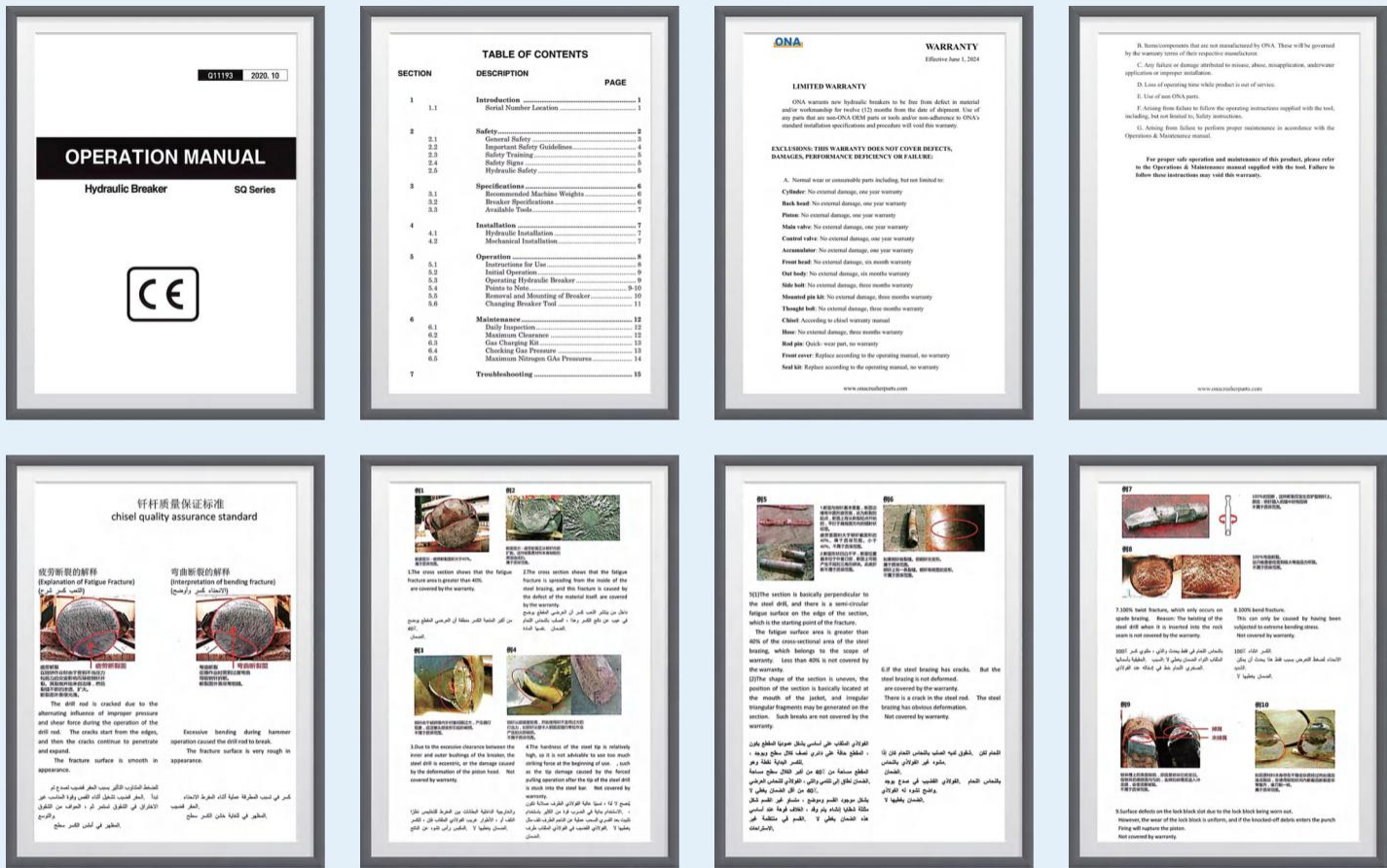
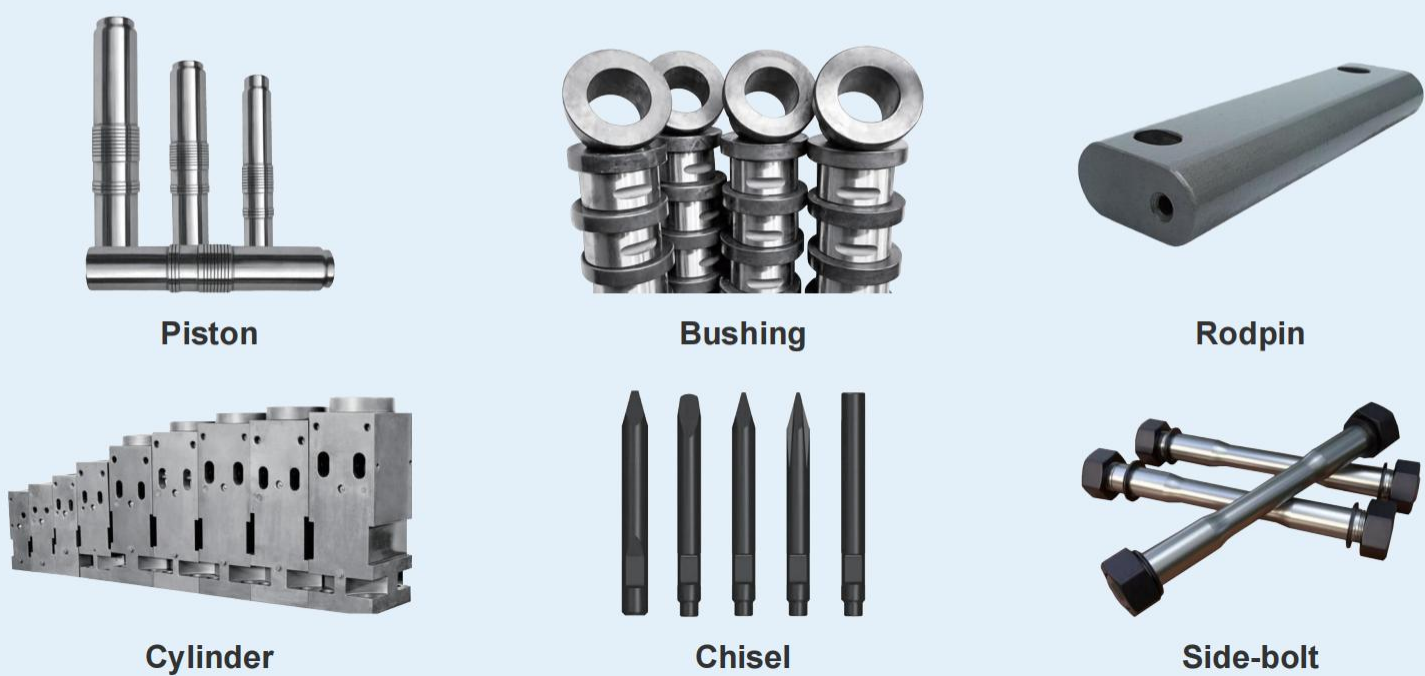
Category:



Product:



Hydraulic Breaker Parts





# Machining & Detection

## Advantage:

1. All parts are produced according to the original drawings, rather than by measuring and mapping dimensions, to ensure the accuracy of size and process requirements;
2. ONA has a very complete range of testing equipment: composition detectors, ultrasonic flaw detectors, colored flaw detectors, three-dimensional coordinate detectors, hardness testers, roughness meters, etc. To ensure that the lowest probability of product problems before shipping.
3. ONA has 5 after-sales service engineers with more than 10 years of work experience, ready to provide technical service support at any time.



KURAKI KBT-13.A Boring and Milling Machining Center



TOYODA Gantry Pentahedron



Turning and Milling MAZAK i-200ST



HEXAGON 3D Coordinate Detector SR20.33.10



HEXAGON 3D Coordinate Detector SR25.50.18

*ONA is a enjoy good reputation among our customers for high-quality products, integrity and responsibility.*